

# Understanding PCORI HSII Grant

Stanford Medicine Center for Improvement Seminar Series  
July 25, 2023

**Grace Lee, MD, MPH**

*Chief Quality Officer of Stanford Medicine Children's Health and Co-PI*

**Paul Maggio, MD, MBA**

*Chief Quality Officer of Stanford Medicine Health Care and Co-PI*

**Samantha M.R. Kling, PhD, RD**

*Quantitative Research Scientist and Co-I of Capacity Building*





1

# PCORI HSII



STANFORD  
EVALUATION  
SCIENCES UNIT

# Leadership and Organization



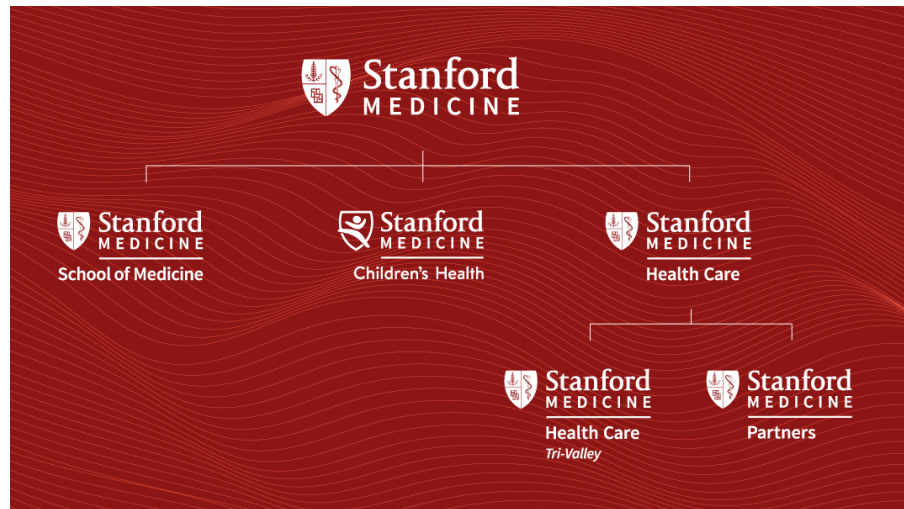
Paul Maggio, MD, MBA  
Chief Quality Officer, SMHC



Grace Lee, MD, MPH  
Chief Quality Officer, SMCH



Lisa Freeman, MBA  
Senior Advisor of SMCI, SHC



# PCORI HSII

- Health Systems Implementation Initiative (HSII)
- New multi-year initiative
- Goal is to advance the uptake of clinical effectiveness research into practice
- 42 health systems selected March 2023
- Healthcare systems eligible for funding to implement specific PCORI-funded evidence into practice
- Anticipate first RFA in Fall 2023



# 10 potential topics

*Topics presented at the June Learning Network Meeting (You can download the recording from [Box](#)) :*

1. Shared Decision-Making for Early-Stage Prostate Cancer
2. IMPaCT Community Health Worker Program
3. Intensive Lifestyle Obesity Treatment in Primary Care Settings
4. Patient and Family Centered I-PASS Rounding Program to Improve Pediatric Patient Safety
5. Risk Prediction for Diabetes

*Additional topics for consideration:*

6. Promoting Effective Use of Narrow Versus Broad Spectrum Antibiotics
7. Non-Surgical Treatment Options for Urinary Incontinence
8. Telehealth Approaches for Treating Complex Psychiatric Disorders in Primary Care
9. Improving Pain Management for Patients Experiencing Sickle Cell Crises
10. Helping Heavy Smokers Make Decisions About Lung Cancer Screening



2

# HSII Capacity Building Project



STANFORD  
EVALUATION  
SCIENCES UNIT

# Capacity Building Project

- Support timely response to RFAs and implementation efforts
- **Goal 1:** Establish **infrastructure** to enable seamless coordination, collaboration, and oversight of activities
  - SMCI will serve as the home
- **Goal 2:** Develop a **toolkit of implementation and evaluation tools** that can be used by teams across Stanford Medicine
  - Currently many improvement programs across all entities
  - ESU leading 5 step plan

# Capacity Building Project

- Support timely response to RFAs and implementation efforts
- **Goal 1:** Establish **infrastructure** to enable seamless coordination, collaboration, and oversight of activities
  - SMCI will serve as the home
- **Goal 2:** Develop a **toolkit of implementation and evaluation tools** that can be used by teams across Stanford Medicine
  - Currently many improvement programs across all entities
  - ESU leading 5 step plan



# Goal #1

- To provide cross-cutting administrative and programmatic support across the 3 entities, which in turn will enhance our ability to respond to future HSII Implementation
  - Establish the Stanford Medicine HSII Executive Management Team (EMT) to streamline participation in HSII, support HSII engagement and participation, develop key processes necessary to support inter-entity collaboration for awarded projects
  - Establish a Stanford Medicine HSII Steering Committee (SC) to review and determine operational support for specific HSII opportunities (COO, CMIO/CIO, CNO, CMO, CFO, Senior Assoc Dean for Research, OGC, RMG, OSR)
  - Leverage existing SMCI infrastructure: (1) HSII Capability Development Workgroup; (2) HSII Evaluation Workgroup to support future HSII Projects; (3) Communications
  - Establish and convene the Stanford Medicine HSII Advisory Board

# Capacity Building Project

- Support timely response to RFAs and implementation efforts
- **Goal 1:** Establish **infrastructure** to enable seamless coordination, collaboration, and oversight of activities
  - SMCI will serve as the home
- **Goal 2:** Develop a **toolkit of implementation and evaluation tools** that can be used by teams across Stanford Medicine
  - Currently many improvement programs across all entities
  - ESU leading 5 step plan

# Meet the ESU Team

Informing delivery of **high quality, coordinated, patient/family-centered care** through **embedded health care delivery research**.

## Qualitative Scientists



Laura Holdsworth, PhD



Cati Brown Johnson, PhD



Sonia Harris, MPH



Rachel Siden, MA



Heather Mui, MPH



Anna Sophia Lessios, MPH



Cassie Bragdon, MA



Mae Verano, MSW

## Clinicians



Steven Asch, MD MPH



Jonathan Shaw, MD MS



Stacie Vilendrer, MD MBA

## Quantitative Scientists



Marcy Winget, PhD



Samantha Kling, PhD



Donn Garvert, MS



Darlene Veruttipong, MPH



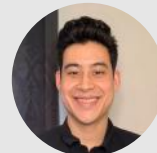
Winnie Wu, MPH

## Operations Manager



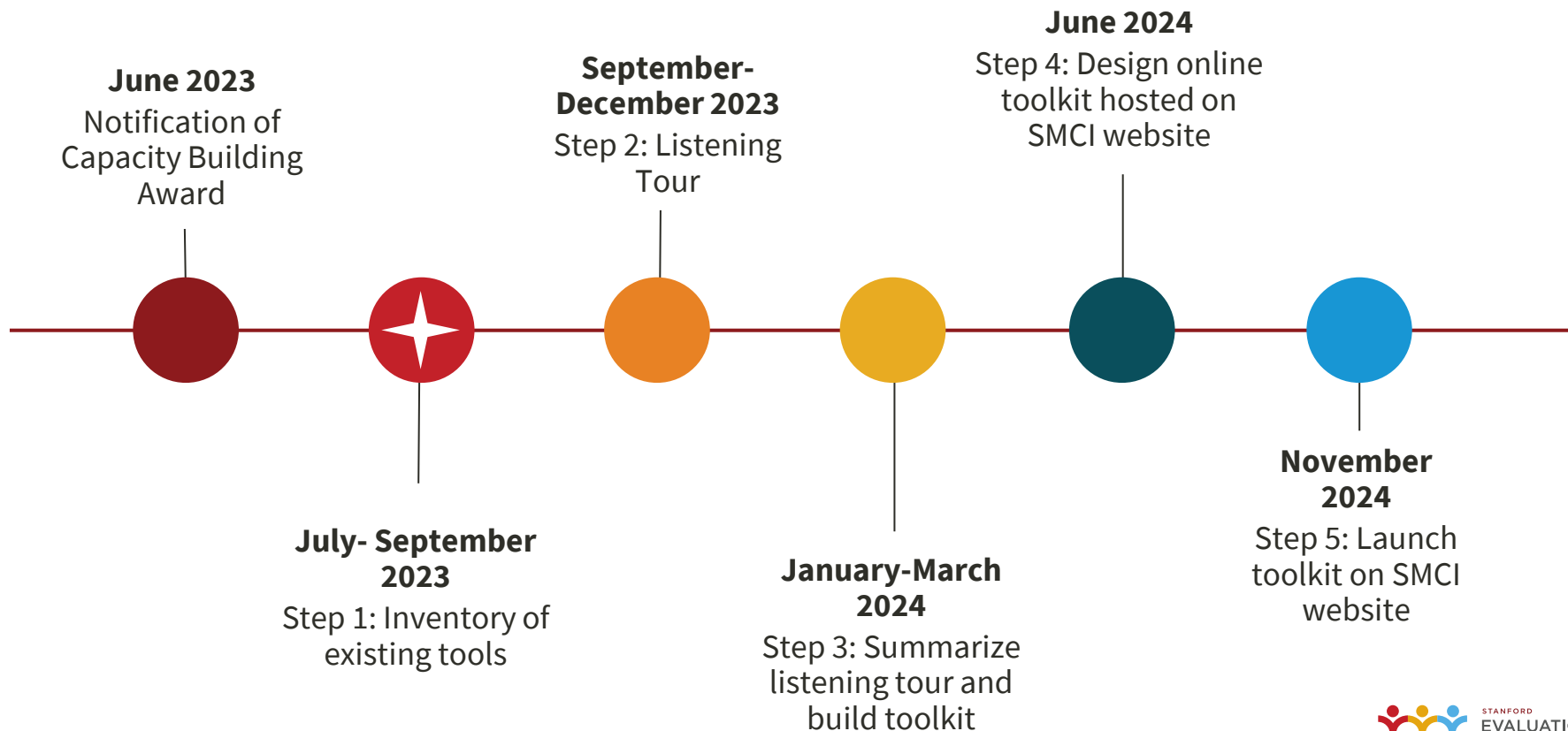
Anna Sophia Lessios, MPH

## Research Admin



Robert Kato, BA

# Toolkit Timeline



# Inventory toolkit examples

## Improvement Videos Organized by Project Stage Improvement Team Website

### Improvement Videos

These videos have been provided to serve any type of learner who is wanting to understand and apply fundamentals of improvement science. Each video includes healthcare examples and testimonials from clinical and operational experts who have applied the methods and seen their impact. The videos can be used for workshops, training courses, ad-hoc project meetings or just on-demand learning. The videos are also sequenced to help project teams go through evidence-based, step by step improvement methods. Videos shown on page in same sequence as YouTube playlist.

### Defining Problems

Intro to Improvement Methods



Writing a Problem Statement



Identifying Root Causes



Prioritizing the Vital Few



Current State Analysis



### Creating Solutions

Developing Key Drivers



Testing Changes



Creating and Following Standard Work



Making Changes More Reliable



Sustaining the Gains



## Planning Through an Implementation Science Lens Stanford Children's Health

ENGAGE (through all stages)			
WHO: Multi-level Stakeholders, Champions, Intervention Participants, Patients/families			
<ul style="list-style-type: none"> <li>Build buy-in</li> <li>Clarify the objectives of stakeholder engagement</li> <li>Assess stakeholder needs "to identify gaps and opportunities and avoid duplication of efforts"</li> <li>Consider how input from stakeholders can be gathered systematically to meet objectives/how input from stakeholders can be collated, analyzed and used</li> <li>Created Shared Mental Model</li> <li>Obtain formal commitments</li> </ul>			
Click on any of the domains below for examples/tools from previous VIP projects			
PLAN	EDUCATE	RESTRUCTURE	EVALUATE AND IMPROVE
<ul style="list-style-type: none"> <li>Conduct local needs assessment</li> <li>Assess for readiness and identify barriers</li> <li>Identify and prepare champions</li> <li>Identify early adopters</li> </ul>	<ul style="list-style-type: none"> <li>Identify knowledge gaps</li> <li>Develop educational materials</li> <li>Conduct ongoing trainings</li> <li>Provide ongoing consultation</li> <li>Inform and influence stakeholders</li> <li>Create a learning collaborative</li> </ul>	<ul style="list-style-type: none"> <li>Workflow integration</li> <li>Revise Roles</li> <li>Create new teams</li> <li>Change physical structure/equipment</li> </ul>	<ul style="list-style-type: none"> <li>Develop tools for quality monitoring</li> <li>Audit and provide feedback</li> <li>Use advisory boards and work groups</li> <li>Obtain and use patient/consumer feedback</li> <li>Intervene with intervention participants to enhance uptake and adherence</li> <li>Capture and share local knowledge</li> </ul>
Download planning tool <a href="#">HERE</a>			
Download blank skeleton for your own project <a href="#">HERE</a>			
FULL RESOURCES: <a href="#">Powell et al.(2012) p.136 Table 3, p. 147 Figure 2; Powell et al.(2015) p.8 Table 3</a>			

## Quality Improvement Planning Tool Stanford Evaluation Sciences Unit

Table 1. Quality Improvement Planning Tool  
Project Title: insert

WHY?	GOAL	WHAT?	HOW?	PLANNED OUTCOMES – How will you measure them?	
Problem/Gap	SMART Goal	Evidence-Based Intervention	Implementation Strategies	Implementation Outcomes	Health Services Outcomes
What is the problem? How is it measured?	Specific, measurable, attainable, realistic, timely	Describe intervention characteristics (e.g., activities, steps), key stakeholders involved, champions	Engage Educate Restructure Audit & feedback Reminders	Acceptability Adoption Appropriateness Costs Feasibility Fidelity Reach Penetration Sustainability	Efficiency Safety Effectiveness Equity Patient-centeredness Timeliness Satisfaction



3

# **PROGRESS:**

## **Capacity Building Goal 2**



**STANFORD**  
**EVALUATION**  
**SCIENCES UNIT**

# Connecting with colleagues across Stanford Medicine

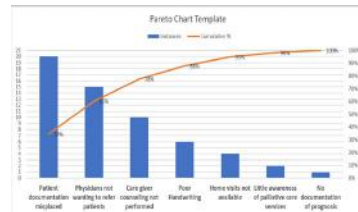
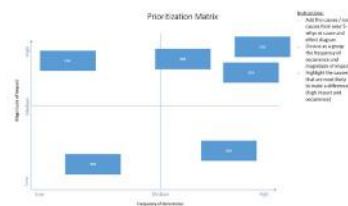
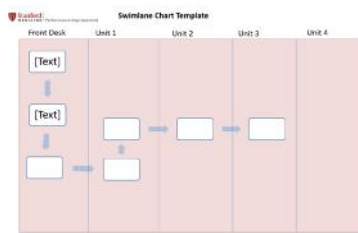
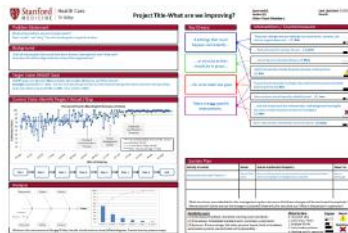
## QI Programs

Quality Improvement Leadership Training (QuILT)	Realizing Improvement through Team Empowerment (RITE)
Tri-Valley RITE	Stanford Medicine Improvement Team
Improvement Capability Development Program (ICDP)	Nurse Residency Program and Evidence-based Care Nursing Fellowship
Advanced Course in Improvement Science (ACIS)	The Cost Savings Reinvestment Program (CSRP)
Improvement Science Professional Certification (LEAN Six Sigma Black Belt)	Stanford Community of Improvement Professionals (SCIP)
Clinical Effectiveness Leadership Training (CELT)	QI Peer Scholarly Community – Dept. of Peds
Packard Quality Management System (PQMS) Foundations	A3 SMCH

Your QI Program or Team!  
(email Sonia at [soniarh@stanford.edu](mailto:soniarh@stanford.edu))

# Inventorying shared tools

- Met with 15 QI programs to date, 3 more scheduled
- Type of Materials Shared:
  - Syllabi & curriculum
  - Exemplar projects
  - Tools & templates
  - Instructional videos
  - Session recordings
  - Reading material (books, manuscripts)
- Creating a framework to depict improvement and implementation process and organize the tools





# Your involvement



Please connect with us by emailing Sonia Harris at [soniarh@stanford.edu](mailto:soniarh@stanford.edu)

# Contact information

NAME	ROLE	EMAIL
<b>Samantha Kling</b>	Co-Investigator Quantitative Research Scientist	<a href="mailto:skling@stanford.edu">skling@stanford.edu</a>
<b>Marcy Winget</b>	Co-Investigator and ESU Director	<a href="mailto:mwinget@stanford.edu">mwinget@stanford.edu</a>
<b>Sonia Harris</b>	Project manager and qualitative support	<a href="mailto:soniarh@stanford.edu">soniarh@stanford.edu</a>
<b>Mae Verano</b>	Project management support	<a href="mailto:mverano@stanford.edu">mverano@stanford.edu</a>